

Look at the difference between the Hellenic art (on the left) and the Hellenistic art on the right. What can you say are the common similarities and differences in how the art looks and how they are depicted?

Hellenic



Statue of the Greek God, Hermes (replica of a statue from 4th century BCE)

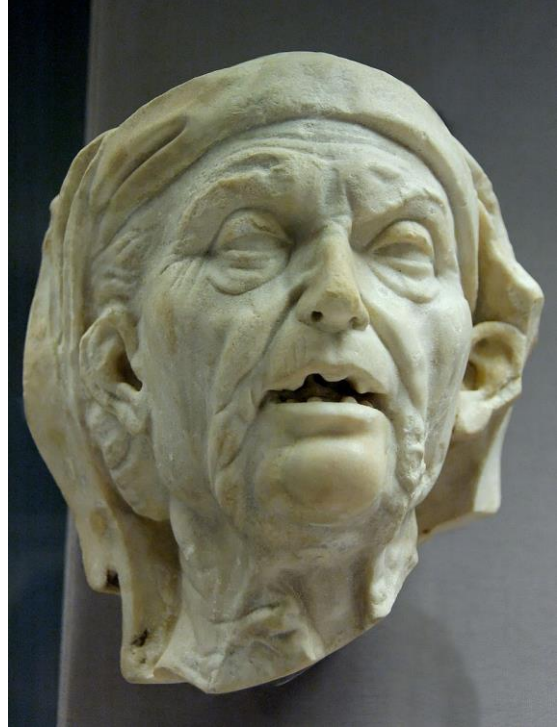
Hellenistic



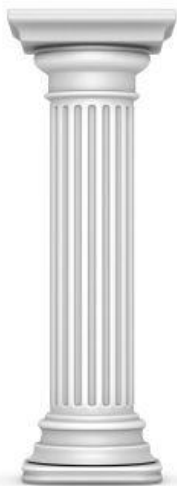
The Hellenistic Prince (3rd or 2nd century)



Bust of Goddess Athena (replica of original from 5th century)



Head of an Old Woman (Roman copy of Hellenistic original from 3rd or 2nd century)



Doric Column



Corinthian Column



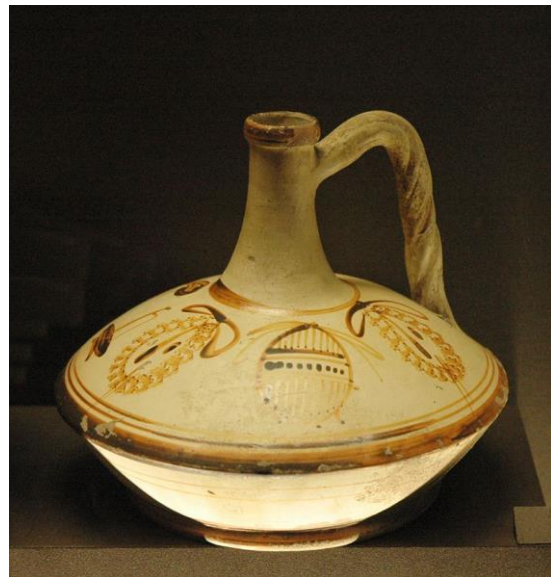
Aphrodite of Cnidus (copy from 350BCE)



Laocoon and His Sons (copy from 200 BCE)



Red-Figure Scene of women playing music
(460 BCE)



Lagynos vase decorated with musical
instruments (150 BCE)

